

APRIL 2022



BEDARD STUDIOS

LIVING LIBRARY

detendre | lire | stockage

CLIENTS

THE CARILLOS



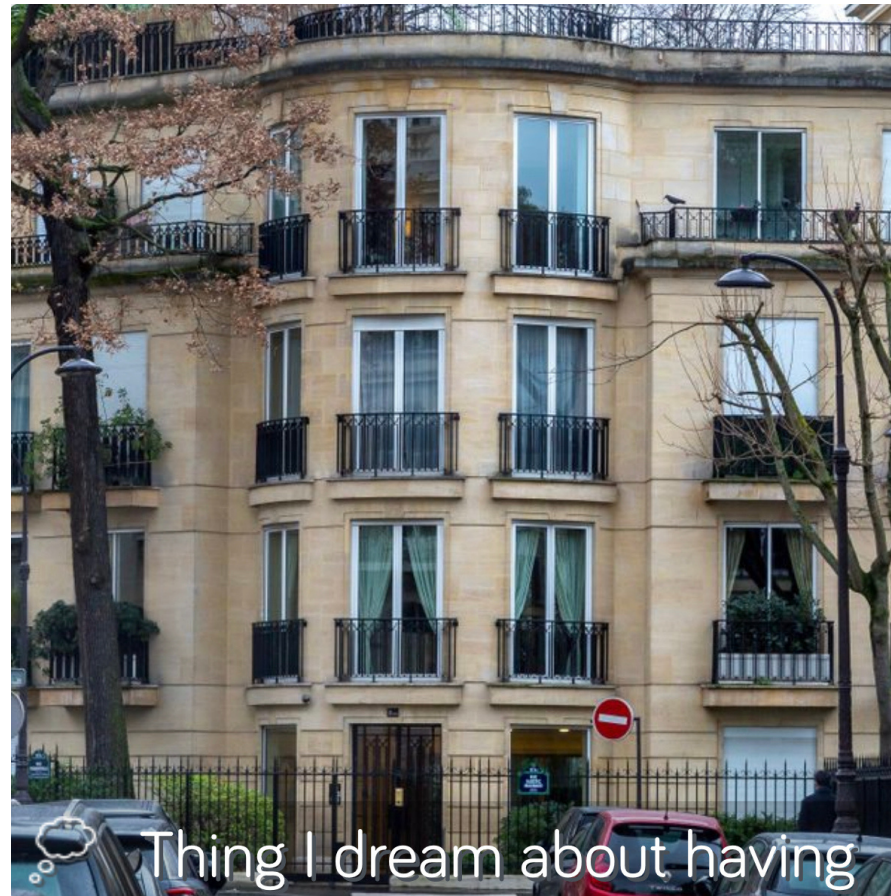
- From Paris, France
- Young married couple (29 & 27)

CLIENTS

THE CARILLOS



- From Paris, France
- Young married couple (29 & 27)



Thing I dream about having

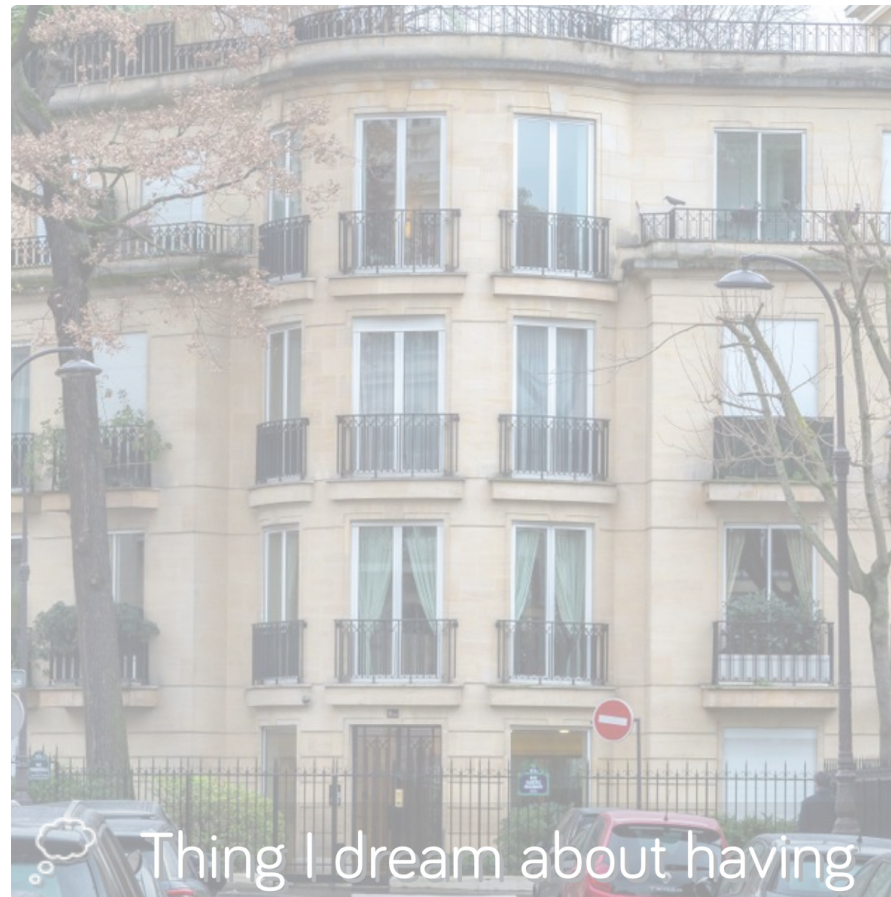
Dream of owning a
classic Parisian apartment

CLIENTS

THE CARILLOS



- From Paris, France
- Young married couple (29 & 27)



Thing I dream about having

Dream of owning a
classic Parisian apartment



Armchair

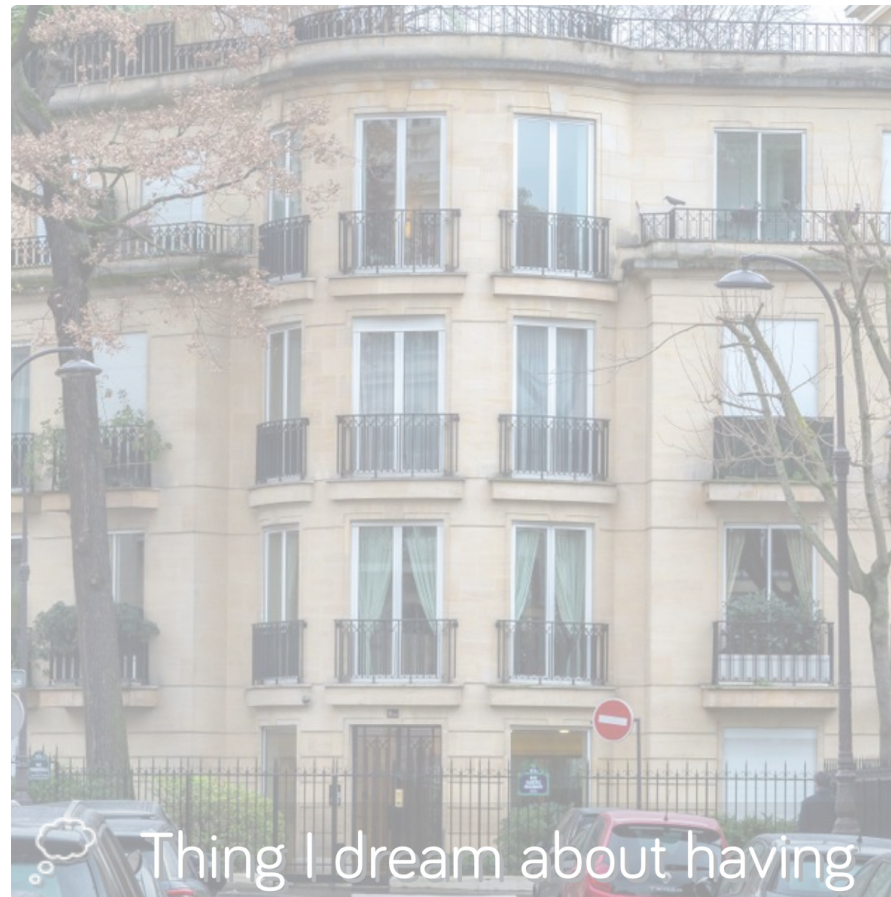
Design style incorporates
high-intensity hues

CLIENTS

THE CARILLOS



- From Paris, France
- Young married couple (29 & 27)



Thing I dream about having

Dream of owning a
classic Parisian apartment



Armchair

Design style incorporates
high-intensity hues



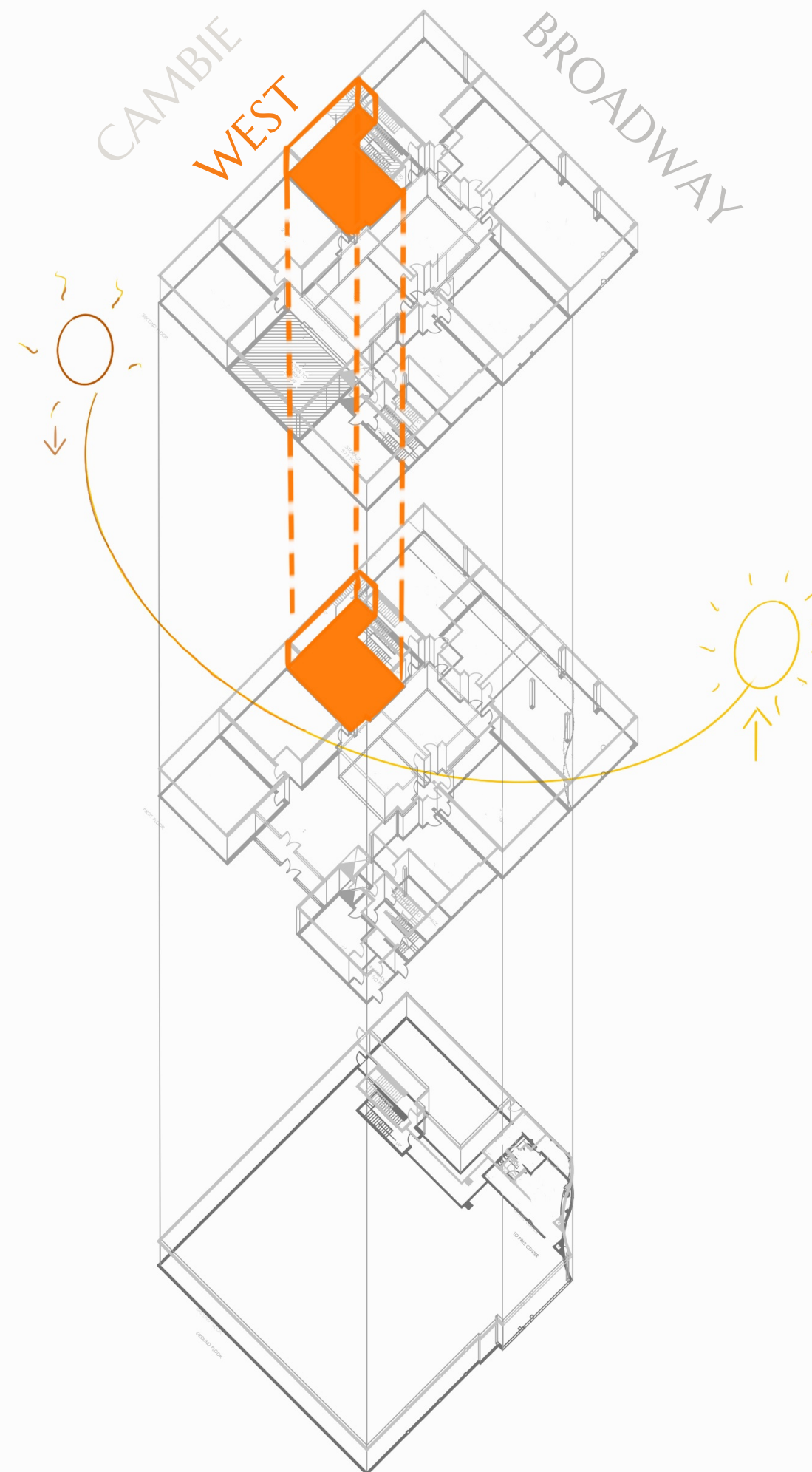
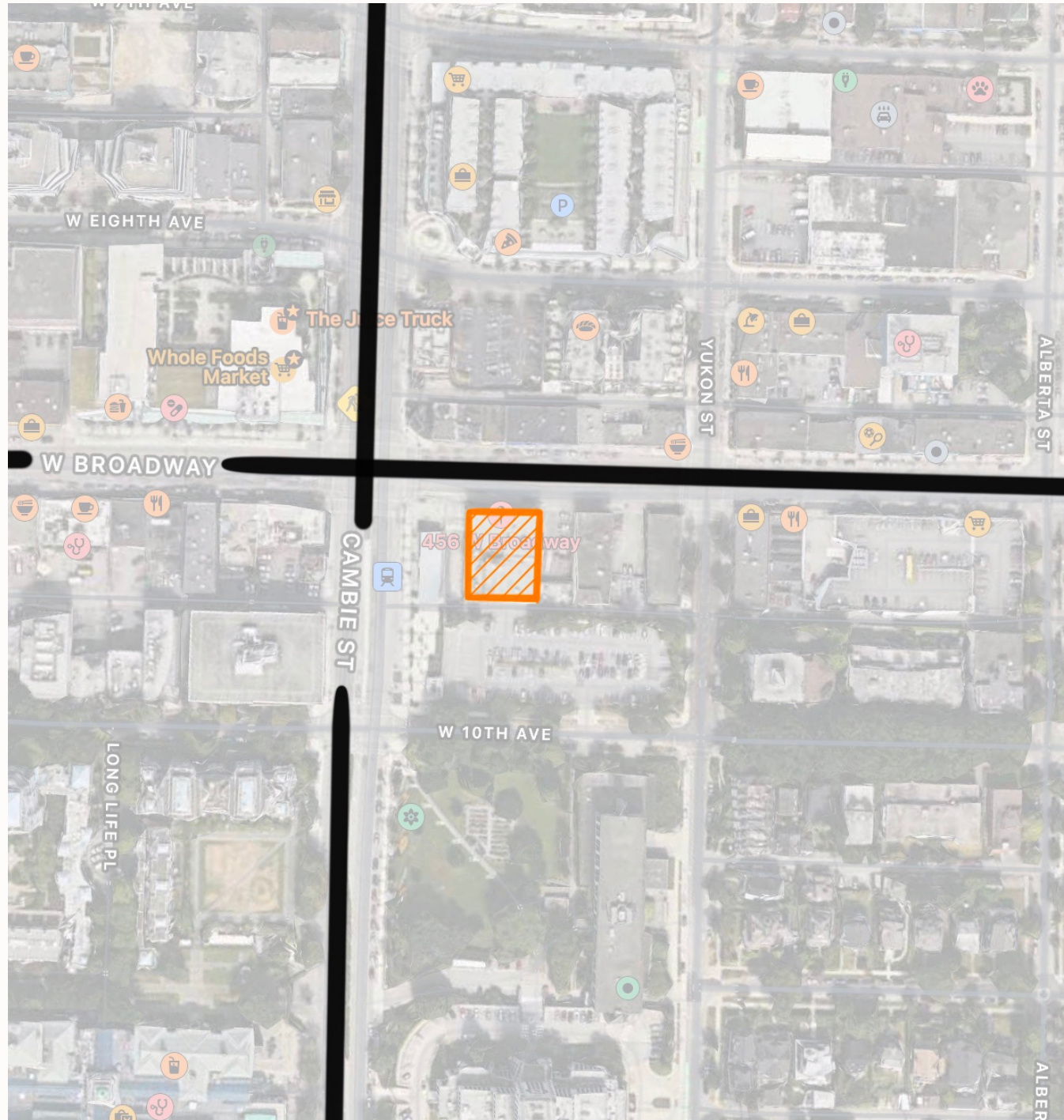
Favorite home decorations



Priceless possessions are
their **books and mementos**

LOFT

456 West Broadway. Vancouver, BC.
Two storeys | 1244 square feet



PROBLEM

How might we design an approachable space
which houses collections and encourages frequent
interactions with priceless possessions?



CONCEPT

Like a library, the home will seamlessly integrate life alongside priceless possessions.

CONCEPT

Like a library, the home will seamlessly integrate life alongside priceless possessions.



Sustainable Storage Along Perimeters

Organization is paramount in the space. Using a Japanese joinery style, detailed storage systems hide away what is necessary, and display the rest.

CONCEPT

Like a library, the home will seamlessly integrate life alongside priceless possessions.



Sustainable Storage Along Perimeters

Organization is paramount in the space. Using a Japanese joinery style, detailed storage systems hide away what is necessary, and display the rest.



Layered Lighting

will enable a multitude of different actions.

CONCEPT

Like a library, the home will seamlessly integrate life alongside priceless possessions.



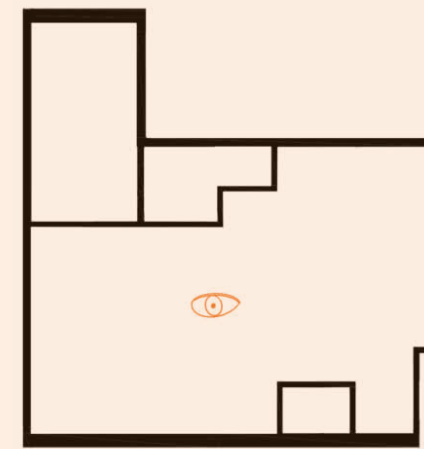
Sustainable Storage
Along Perimeters

Organization is paramount in the space. Using a Japanese joinery style, detailed storage systems hide away what is necessary, and display the rest



Layered Lighting

will enable a multitude of different actions.



Open Spaces &
Sightlines

bring everything together by inviting guests in to view the Carillo's treasures from wherever possible.

CONCEPT

Like a library, the home will seamlessly integrate life alongside priceless possessions.



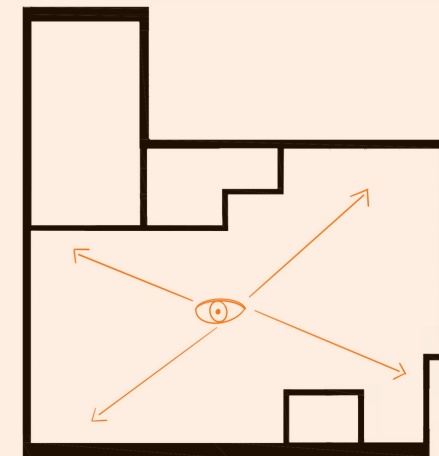
Sustainable Storage Along Perimeters

Organization is paramount in the space. Using a Japanese joinery style, detailed storage systems hide away what is necessary, and display the rest



Layered Lighting

will enable a multitude of different actions.



Open Spaces & Sightlines

bring everything together by inviting guests in to view the Carillo's treasures from wherever possible.



Merging Neoclassical & Pop Art Styles

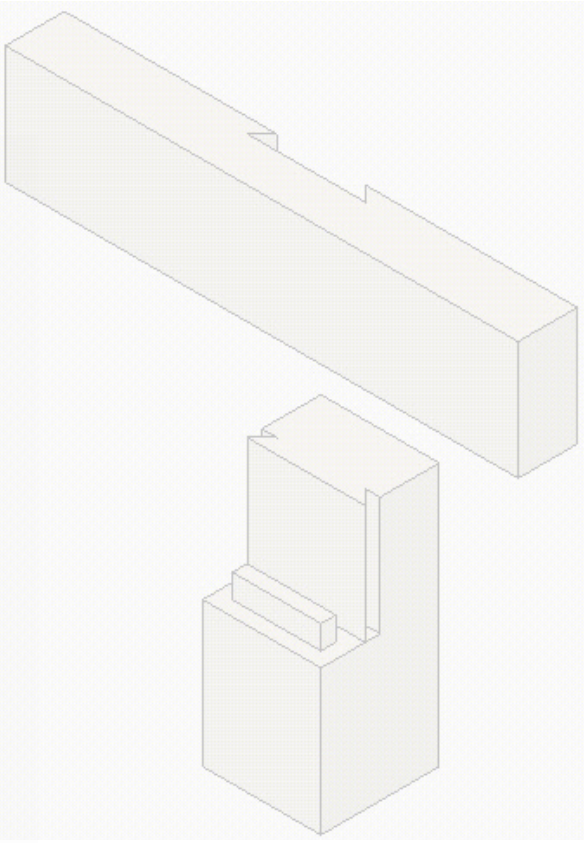
Taking the Carillo's love of Parisian design and fusing it with their love of colour.

FLOOR PLAN

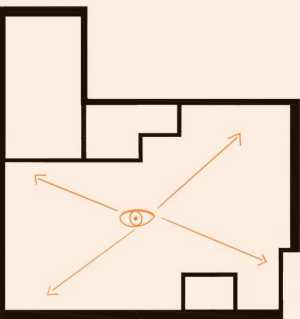
Millwork installed using a Japanese style of joinery - no nails or glue.

WEST BROADWAY

CAMBIE



FLOOR PLAN



Use of glass allows light to pass through & users to view priceless possessions.

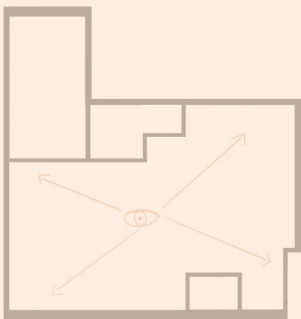
WEST BROADWAY

CAMBIE

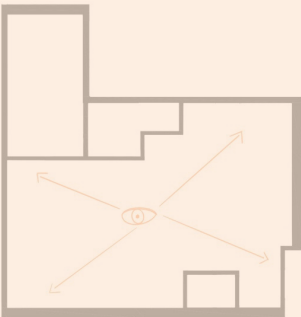


LIGHTING INTENT

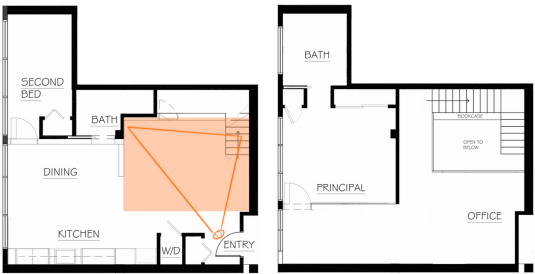
Warm evening light paired with layers of soft artificial light.



ENTRY

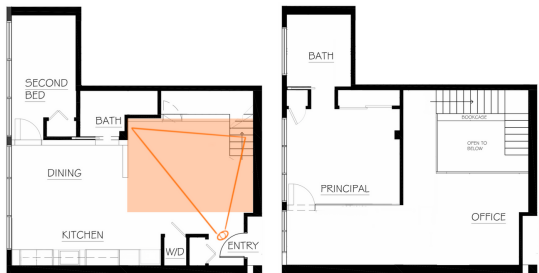
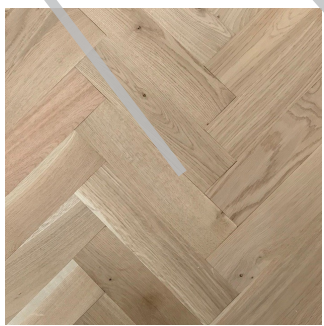
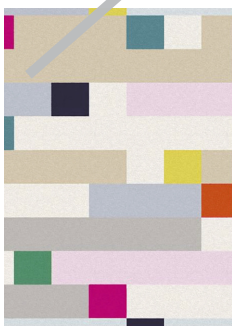
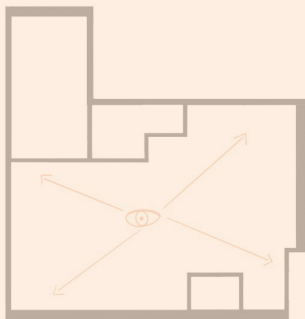


A collection with colour.



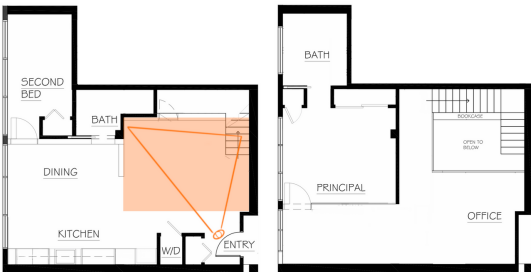
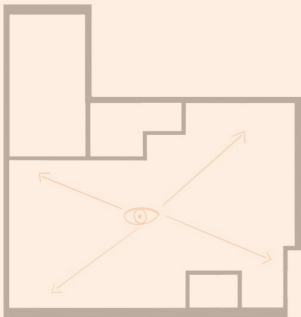
ENTRY

A collection with colour.



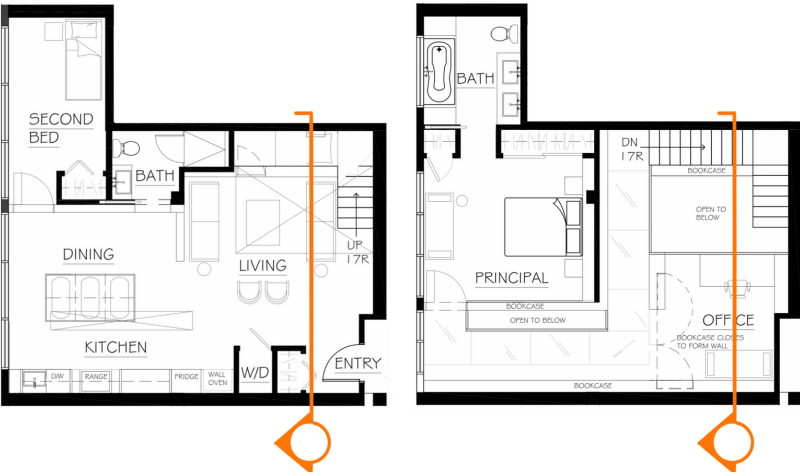
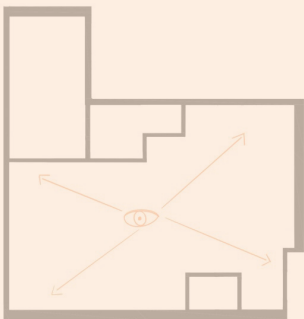
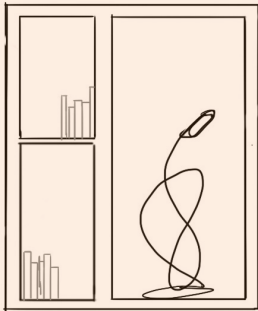
ENTRY

A collection with colour.



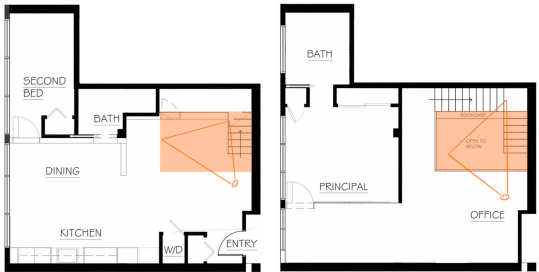
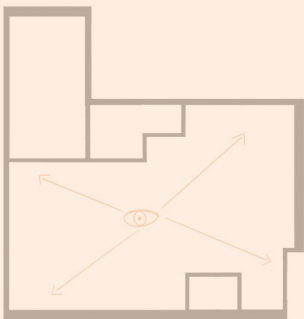
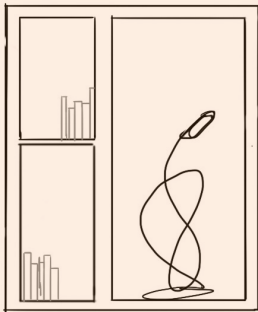
LOFTED AREA

Connecting levels with continuous millwork.



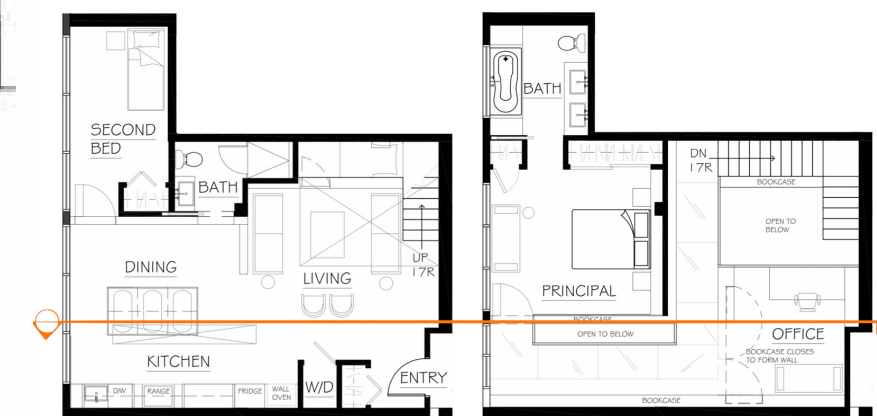
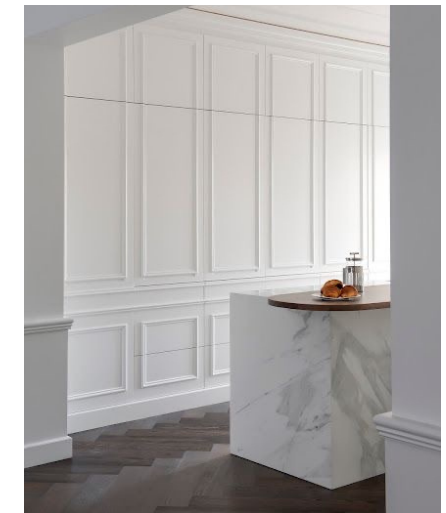
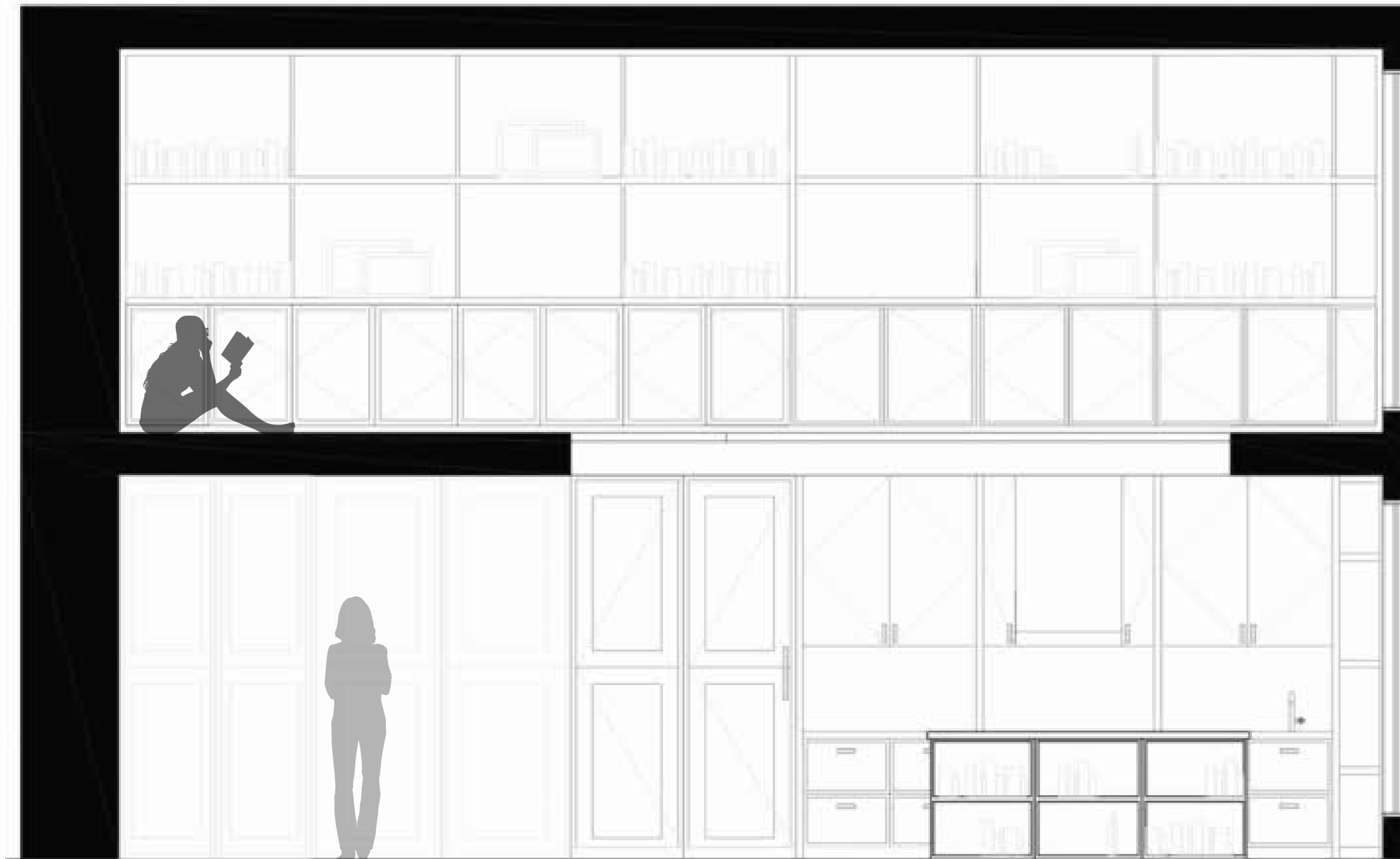
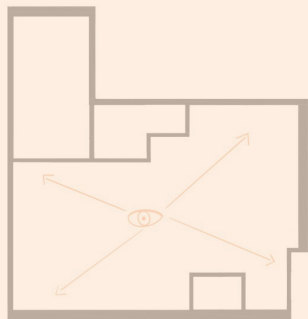
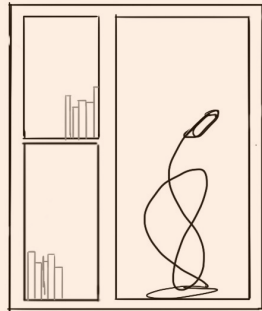
LOFTED AREA

Connecting levels with continuous millwork.



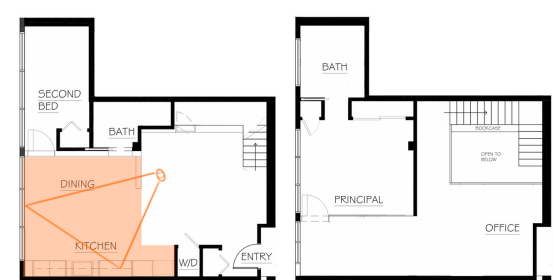
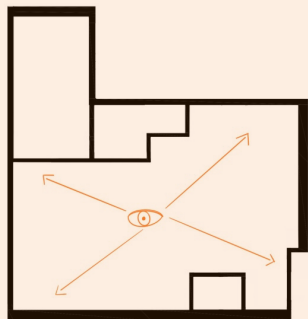
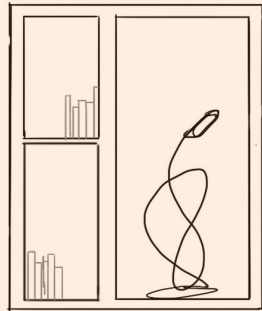
KITCHEN/ DINING

Integrating millwork & display with everyday life.



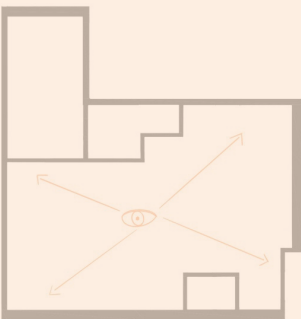
KITCHEN/ DINING

Integrating millwork & display with everyday life.



KITCHEN/ DINING

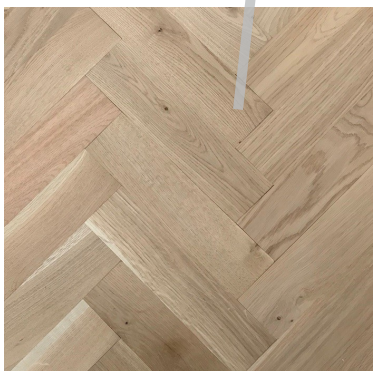
Integrating millwork & display with everyday life.



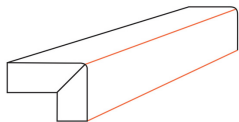
Chantilly Lace
OC-65



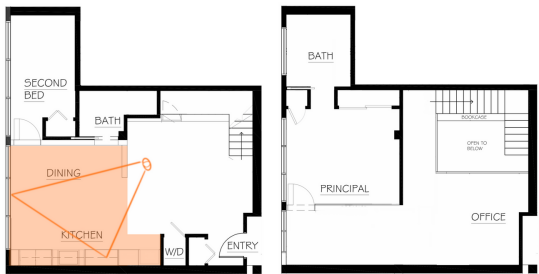
Big Country Blue
2066-30



5114 Calacatta Maximus

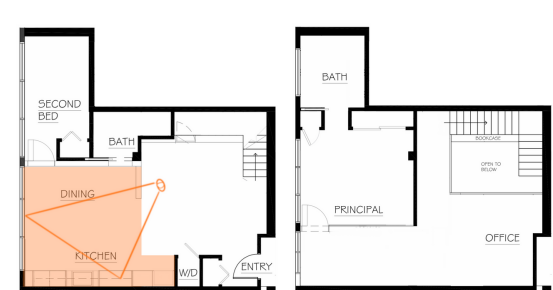
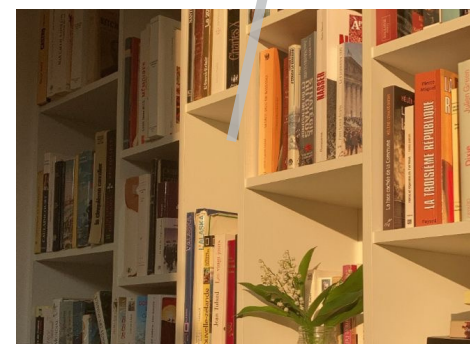
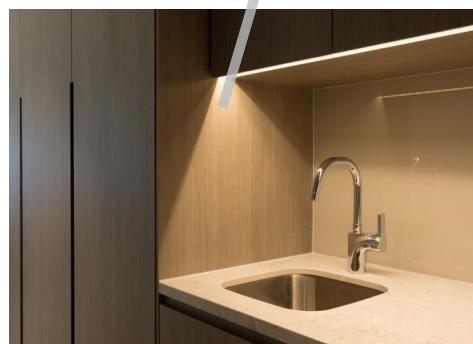
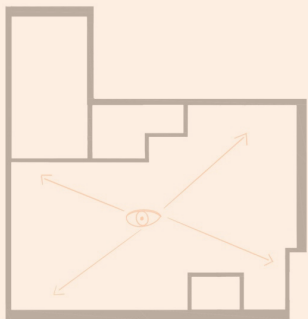


Miter



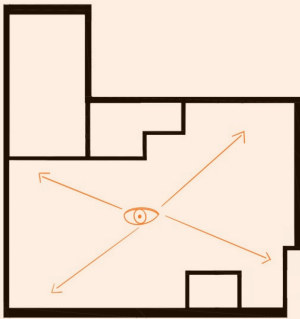
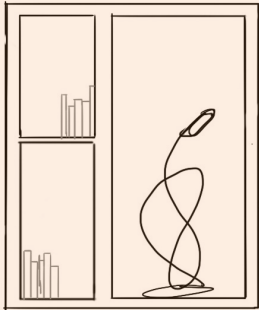
KITCHEN/ DINING

Integrating millwork & display with everyday life.



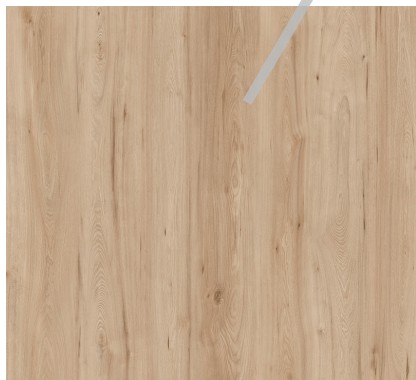
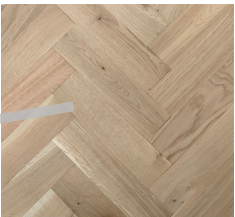
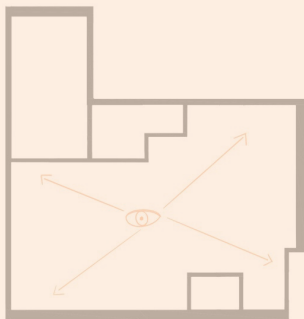
OFFICE

Work, read, store.



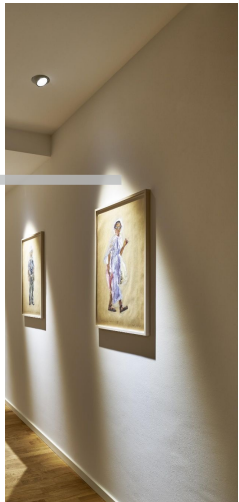
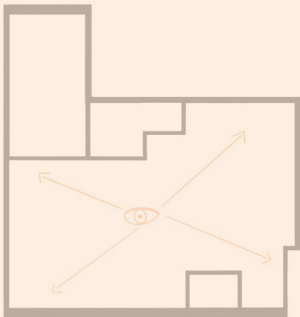
OFFICE

Work, read, store.

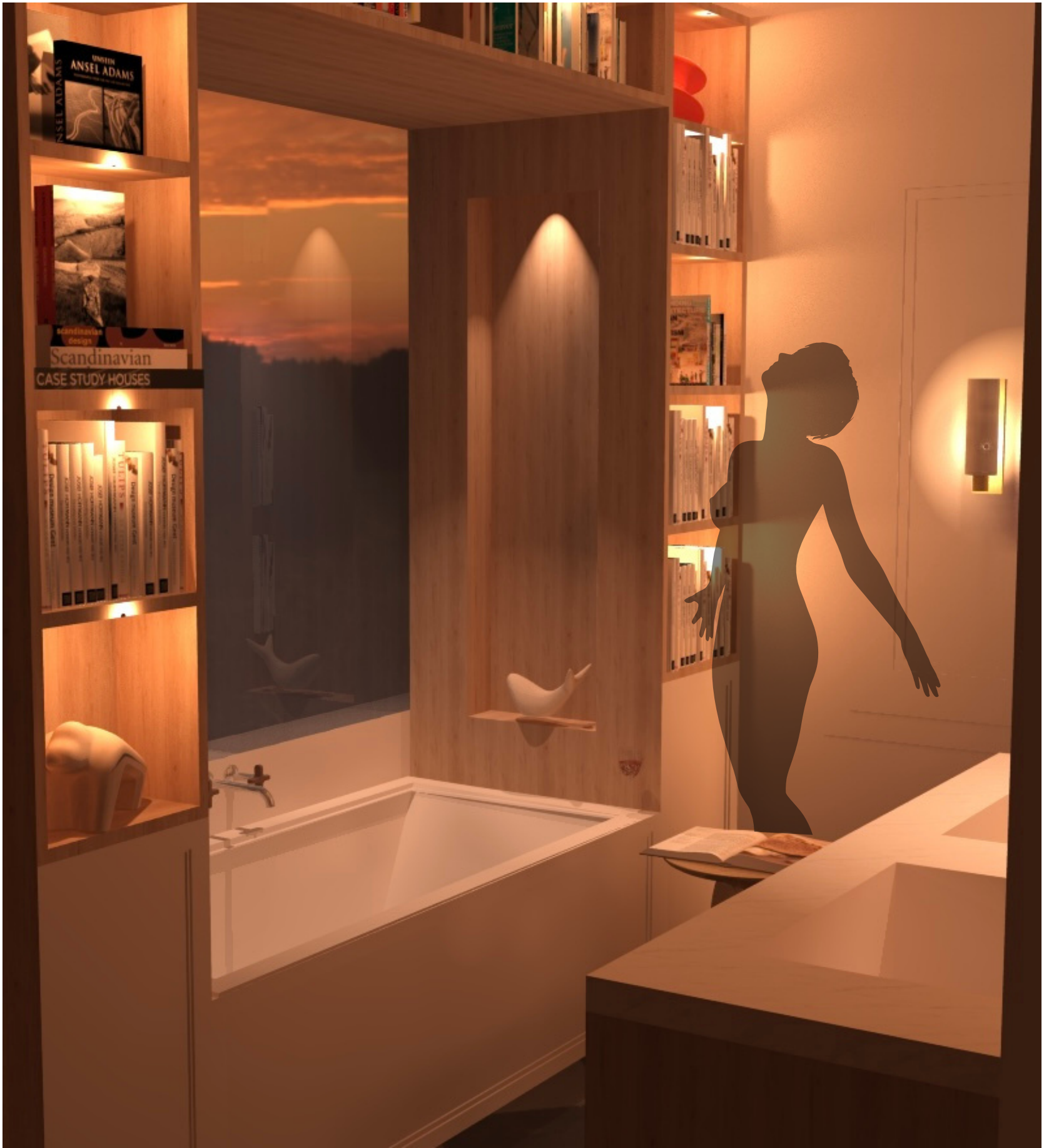
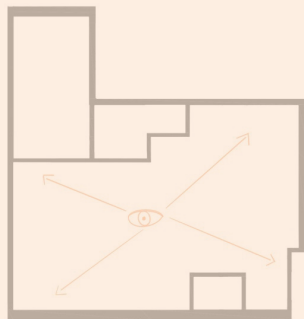


OFFICE

Work, read, store.

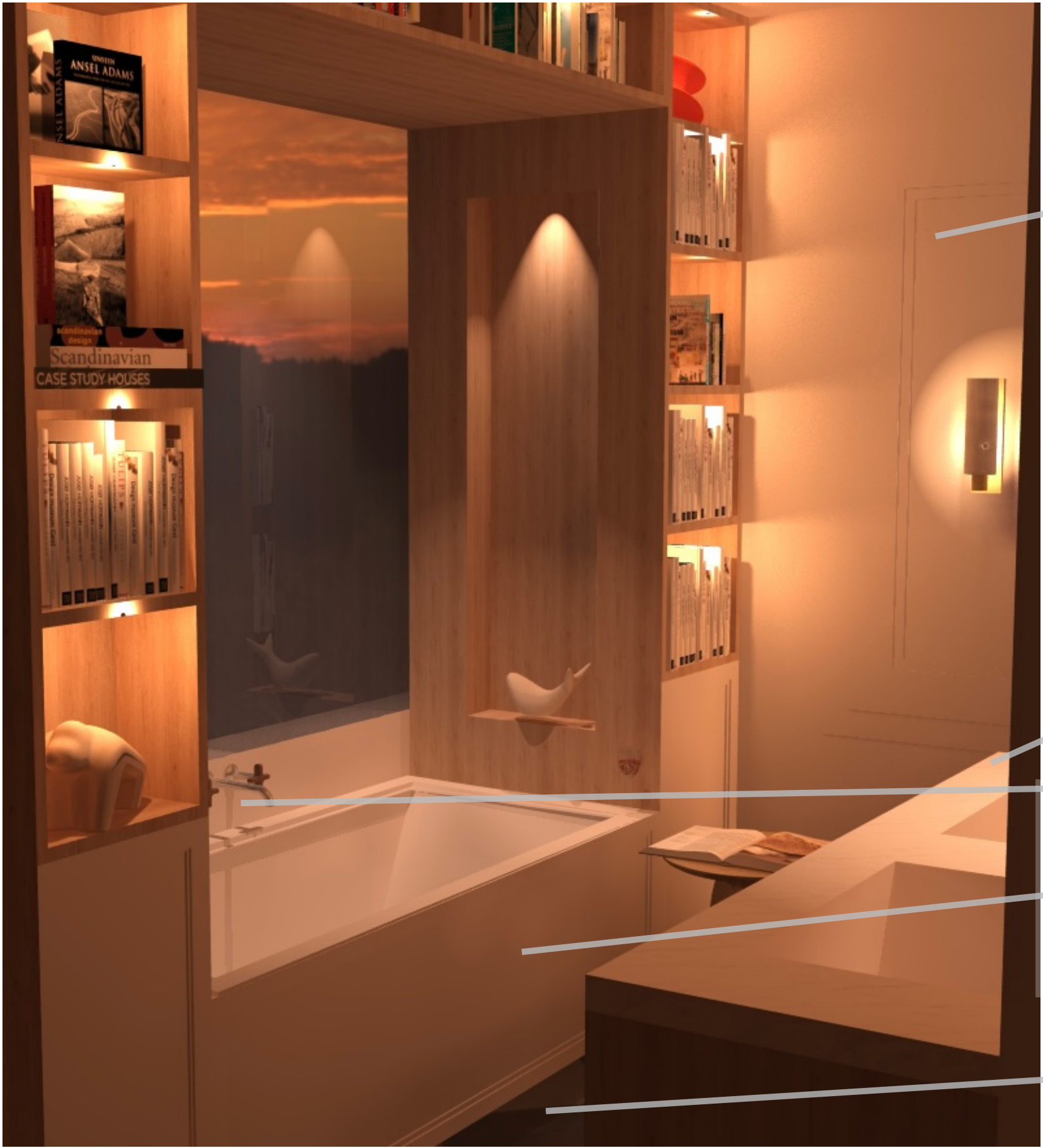
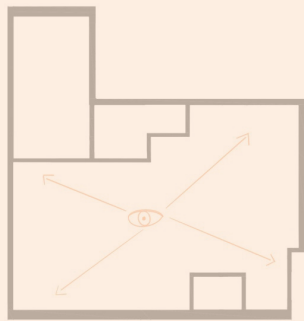


ENSUITE



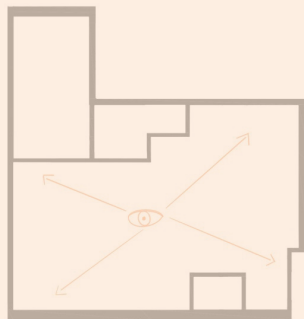
The perfect place to end your day.

ENSUITE

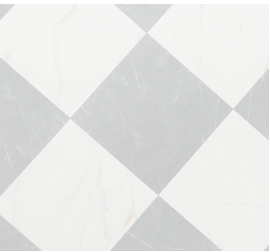


The perfect place to end your day.

ENSUITE



5114 Calacatta Maximus



The perfect place to end your day.

LIVING LIBRARY

How might we design
an approachable
space which houses
collections of priceless
possessions?



LIVING LIBRARY

How might we design an approachable space which houses collections of priceless possessions?

Surround the user with their collections, highlighting them wherever possible; intermingling display with everyday activities.

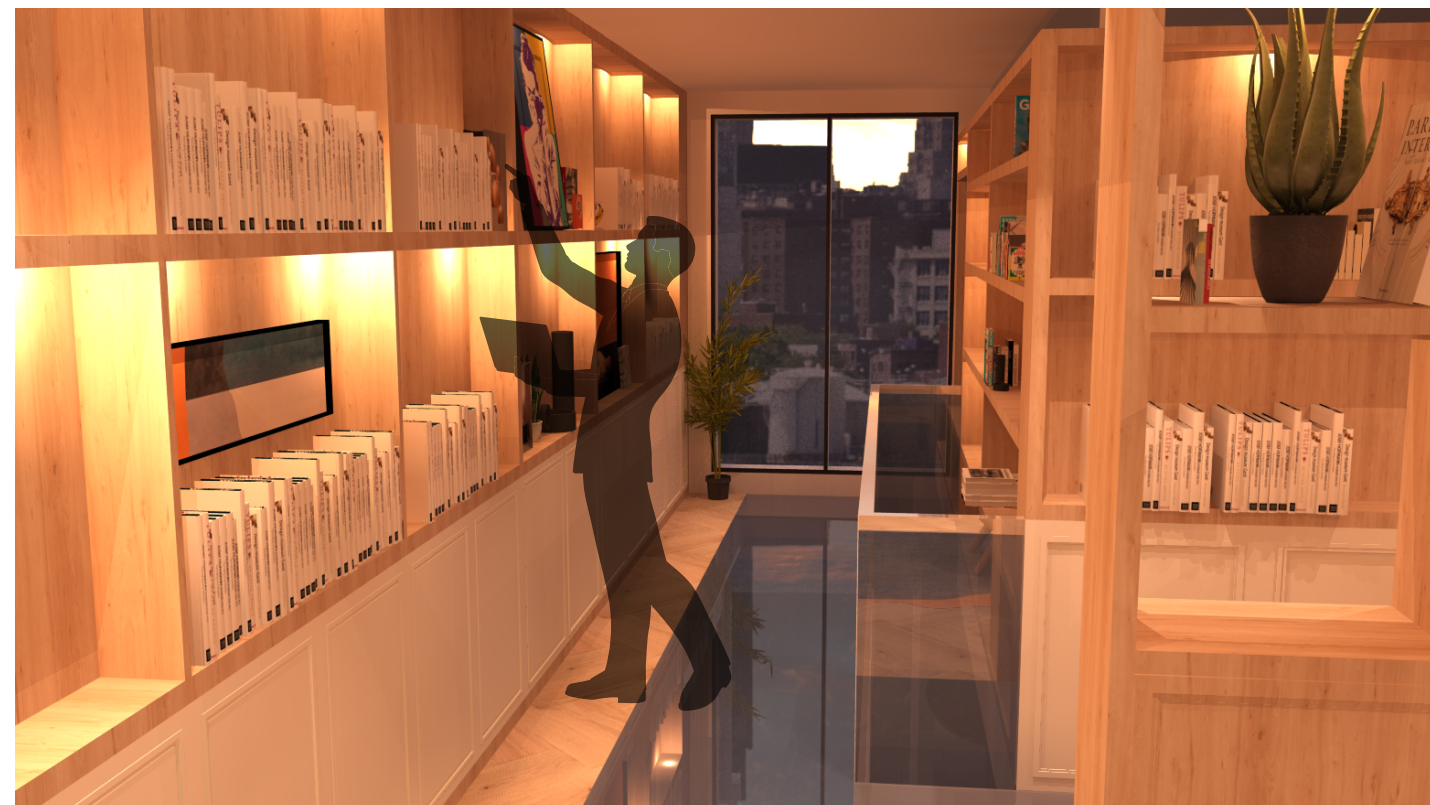


LIVING LIBRARY

How might we design an approachable space which houses collections of priceless possessions?

Surround the user with their collections, highlighting them wherever possible; intermingling display with everyday activities.

Through the use of lighting, repetition, and open sight lines, the clients will be more encouraged to pick up and read their favourite book.



LIVING LIBRARY



Welcome home.

APRIL 2022

BEDARD STUDIOS

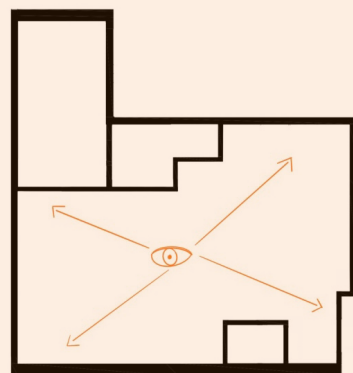
LIVING LIBRARY



Sustainable Storage & Display Along Perimeters



Layered Lighting



Open Space Planning & Sight Lines



Integrating Neoclassical & Pop Art Styles

